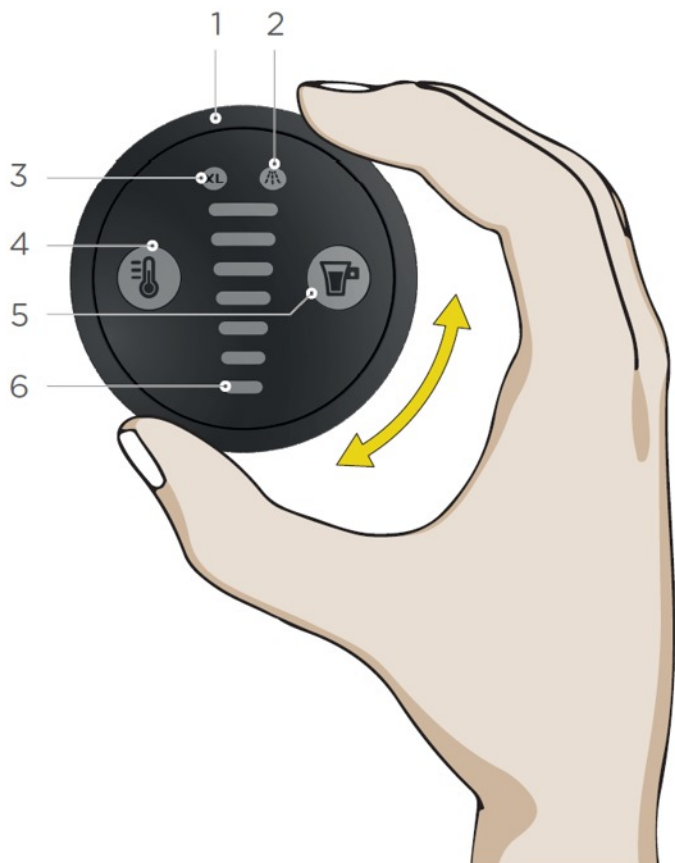


CONTROL PANEL

Compatible capsules :



1. Control ring

Select the volume for the beverage preparation

2. Descaling indicator

The machine needs to be descaled after 300 extractions

3. XL function

Prepare an extra large cup

4. HOT AND COLD SELECTION

The beverage temperature can be set (2 predefined settings):



Cold



Hot



Blinks : cold, but the water temperature is still too high

5. Start/Stop button

Start/Stop the beverage preparation

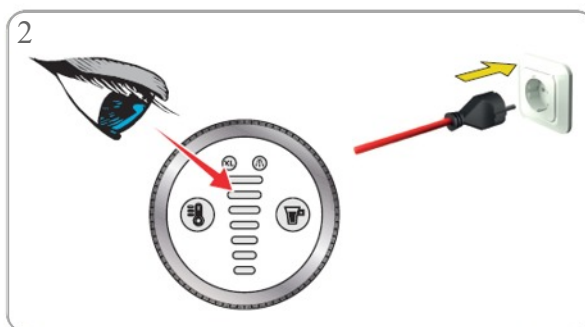
6. Volume display

Shows the extraction progress by moving down from the selected volume until completion

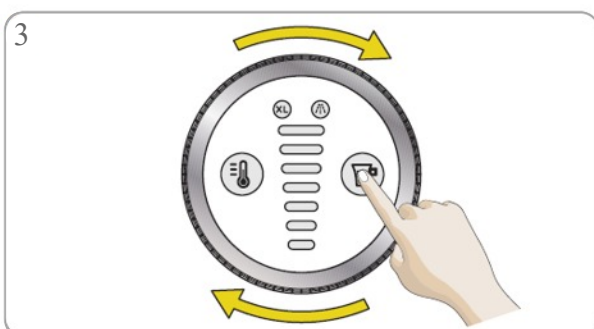
HOW TO START THE MACHINE



1 Fill the water tank with fresh drinking water. Insert it back into the machine.



2 Plug the device into the power outlet, ensuring the plug is fully inserted.



3 Press any button or rotate the control ring to switch on the machine ...



3 another way ... or opening the locking handle to switch on the machine



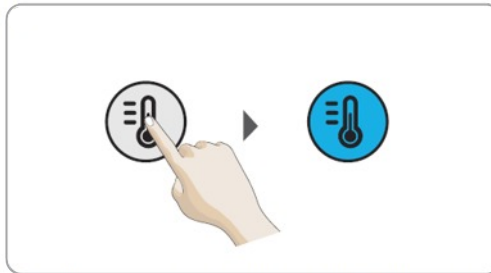
COLD MODE

Compatible capsules :

The cold mode must only be used with dedicated cold products, e. g. Cappuccino Ice.



The machine is switched off.



Option 1 : Press the temperature selection button to start the machine in cold mode. A cold beverage can be prepared immediately.



Option 2 : Open the locking handle. The machine switches on automatically. Press the temperature selection button within 10 seconds after starting the machine to change to cold mode (blue). A cold beverage can be prepared immediately.

PREPARING A BEVERAGE



Adjust the drip tray position. Place the cup with the correct cup size on the drip tray. Check if the water tank contains enough fresh drinking water.



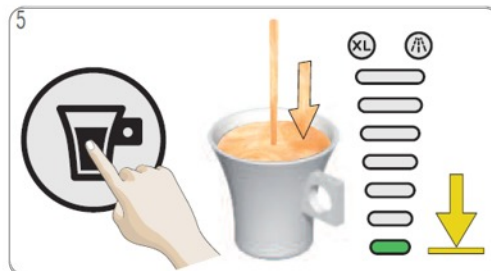
Open the locking handle. The machine switches on automatically. The temperature selection button blinks while the machine is heating up for approximately 40 seconds. Afterwards, the temperature selection button lights steady red. The machine is ready to be used.



Make sure the rinsing tool is not inside. Insert the capsule in the capsule holder. Insert it back into the machine. Close the locking handle.



Use the control ring to set the volume in accordance with the number of bars shown on the capsule or select the desired volume to your own taste. Choose XL beverage for an extra big cup. Wait around 1.5 min if you want to prepare a second extra big cup.



Press the start/stop button. The beverage preparation starts. **Do not open the locking handle during the extraction.** Wait until the extraction stops. The machine stops the preparation automatically. The extraction can be stopped at any time manually by pressing the start/stop button.



After finishing the preparation, the temperature selection button and the volume display light blink for up to 8 seconds. **During that time do not open the locking handle!**



After the extraction is finished open the locking handle. Remove the cup from the drip tray.



Pull out the capsule holder. Remove the used capsule. Put the used capsule in the dustbin.



Rinse both sides of the capsule holder with fresh drinking water. Dry the capsule holder. Insert it back.

TWO CAPSULES (E. G. CAPPUCCINO)

For beverage that requires two capsules (for example cappuccino: espresso & foam milk), for the first capsule follow steps 1 to 8 **without removing the cup (step 7)**, and then for the second capsule follow steps 2 to 9.



entire manual as pdf
scan to download



this concise manual as pdf
scan to download



more at Villa Flora
Manuals and manuals area
download area